

EV-DO Installation Procedure

When you receive your rental kit, please verify the following items are included:

- EV-DO Data card
- Data Card installation software
- Installation Procedure

Getting Started

Follow these steps to install VZAccess Manager:

1. Turn on your computer and close all applications.
2. Insert the CD-ROM into your CD drive.
3. If set-up does not automatically start, click the Start button on the taskbar and choose Run. Type D:\Start (where D is the letter of your CD-ROM drive) and click OK.
4. Follow the steps in the next section...

The VZAccess Manager Setup Program

1. Double-click the VZAccess Manager setup program. You will be presented with a "Welcome" screen. Click the Next button to continue with the installation process.
2. After the Welcome screen you will see the VZAccess Manager License Agreement. In order to install and use this product you must agree with the terms of this agreement. Select "I agree with this software license agreement", then click the Next button to continue.
3. You are now ready to select the location on your computer where the VZAccess Manager should be installed. It is recommended that you do not modify the default destination folder. Click the Next button to continue.
4. You are ready to begin installing VZAccess Manager components onto your computer. Click Next to continue.
5. The files will copy to the folder you specified in step 3.
6. Installation is now complete. Click the Finish button to leave the VZAccess Manager setup program.
7. The setup program will automatically create a VZAccess Manager shortcut on your desktop.
8. You must restart your computer before using the VZAccess Manager.



VZAccess
Manager

The VZAccess Manager Setup Wizard

After you have successfully completed the installation process of VZAccess Manager, you are ready to start the VZAccess Manager program and begin your initial setup. The steps in the Setup Wizard are critical to the proper operation of VZAccess Manager when using your WWAN or Wi-Fi device to connect to the Internet wirelessly.

1. Click the Start button, select the Programs menu and choose the VZAccess Manager menu item to start the program, or double click the VZAccess Manager icon on your desktop.
2. On first-run of VZAccess Manager the Setup Wizard will automatically run. You will be presented with a Welcome screen.
3. If you have an Internet connection, it is recommended that you check to see if you are running the latest version of VZAccess Manager. Click the Check for Updates button to perform this check. Click Next to continue.
4. Specify the type of wireless device that you intend to use with VZAccess Manager. Select "Detect both Wi-Fi and WWAN", or "Detect WWAN device only (1xEV-DO/1xRTT/CDMA)". For the purposes of this guide, "Detect both Wi-Fi and WWAN" will be used. Please note that your experience in Step 4 may be different if you use a different selection. After making the appropriate selection, click Next to continue.
5. VZAccess Manager will detect the Wi-Fi adapters on your computer. If your computer has a built-in Wi-Fi adapter, you do not need to do anything and can proceed to the next step. Otherwise, please insert your Wi-Fi PC Card now. You will need the drivers for the card if not already installed on the computer. Once complete, click Next to continue.

Note: WWAN (Wireless Wide Area Network) denotes any 1xEVDO, 1xRTT or CDMA connection to the Verizon Wireless network such as BroadbandAccess, NationalAccess or Quick 2 Net.

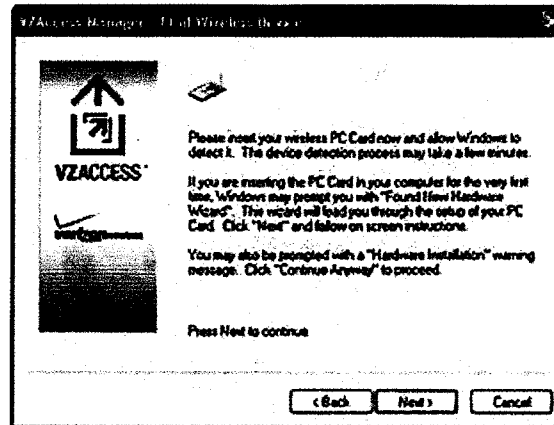
The VZAccess Manager will now detect and setup your WWAN device.

6. Select the type of connectivity you wish to use with your wireless device. Once you have selected your connectivity option, click Next to continue.
7. The VZAccess Manager will find your wireless device.

If you selected USB and have not already installed the data cable drivers supplied with the cable, you must install them now. To install the data cable drivers click the Cancel button below to exit the Setup Wizard and then refer to the documentation included with the cable. Please plug the data cable into your wireless phone and then plug the cable into your computer. If your wireless phone is not turned on, do so now.

For PC Card users, insert your PC Card now, and wait for Windows to detect and install drivers for the device.

Click Next to continue. At this point in the setup process VZAccess Manager will attempt to find your wireless device. If a device is found, you will see the following screen.



8. The detection and configuration process for your wireless device is now complete. In this step you can elect to run the VZAccess Manager automatically every time you start up your computer. To do so, check the "Run VZAccess Manager at Startup" checkbox. Click Finish when complete.

After clicking the Finish button VZAccess Manager will launch the Venturi client install program. Follow the on-screen instructions to install the Venturi client.

Connecting with VZAccess Manager

Once your WWAN device is properly configured, connecting to the Internet is as simple as selecting the network connection type shown in the list and clicking the Connect button. Note that the Connect button immediately above the list will change to "Connect WWAN" or "Connect Wi-Fi" as appropriate based on the current selection in the networks list.

1. Select one of the following connections: **"NationalAccess," "NationalAccess - BroadbandAccess,"** or **"Quick 2 Net (14.4kbps)"**.
2. Click the "Connect WWAN" button when it becomes enabled.

Once connected, the "Connect WWAN" button will change to "Disconnect". Simply click this to end your current connection. To connect to any other network shown, select it, and then select "Connect".

The Status Bar

Information regarding your current network connection can be seen in the status bar along the bottom of the VZAccess Manager interface.

The first time you connect with the NationalAccess - BroadbandAccess, NationalAccess or Quick 2 Net (14.4 kbps) connections, or a private Wi-Fi connection, a connectivity warning message will appear. You have the option to suppress these warning messages when they are displayed.

VZAccess Manager will display status information at the bottom during the connection process as well as while connected. When a connection is active, its name will appear as bold text.

The status is also reflected in the Task Tray icon.



Connected



Idle - Not Connected



Connecting



Disconnecting

A window will also slide out of the tray showing when you connect and disconnect from networks.



[Close Window](#)

BroadbandAccess/NationalAccess

Now you can get the broadband-like speed you require to work efficiently outside the office. Using one of our wireless PC cards or BroadbandAccess Connect capable wireless devices with your laptop, you can connect to the Internet, corporate intranet, check your email and download attachments with average download speeds of 400 - 700 Kbps¹.

BroadbandAccess will give you the freedom to stay productive and connected whether you're on the road or in a meeting across town. You will also receive NationalAccess service when outside the BroadbandAccess Rate and Coverage Area^{2,3}. NationalAccess is available in thousands of cities and towns and allows download speeds of 60-80 Kbps and burst up to 144 Kbps.⁴

Subject to Customer Agreement, Calling Plan, credit approval & [other service] terms.

¹BroadbandAccess is available in 223 major metropolitan areas covering over 186 million people and 141 primary airports in the U.S. Speeds average 400-700 kbps with bursts capable of 2 Mbps on our network tests with 5MB FTP data files.

²BroadbandAccess Connect service is available for BlackBerry/PDA's in our National Enhanced Services Rate and Coverage Area and Extended National Enhanced Services Rate and Coverage Area. Microsoft Windows required.

³BroadbandAccess Connect service on capable handsets is only available in our National Enhanced Services Rate and Coverage Area and not in the Extended National Enhanced Services Rate and Coverage Area. Microsoft Windows and Mobile Office Kit required and sold separately.

⁴Speed claim based on our network test with 101 KB FTP data files, without compression. Actual throughout speed and coverage may vary. Speed claim not applicable when roaming.

© 2007 Verizon Wireless

Ad